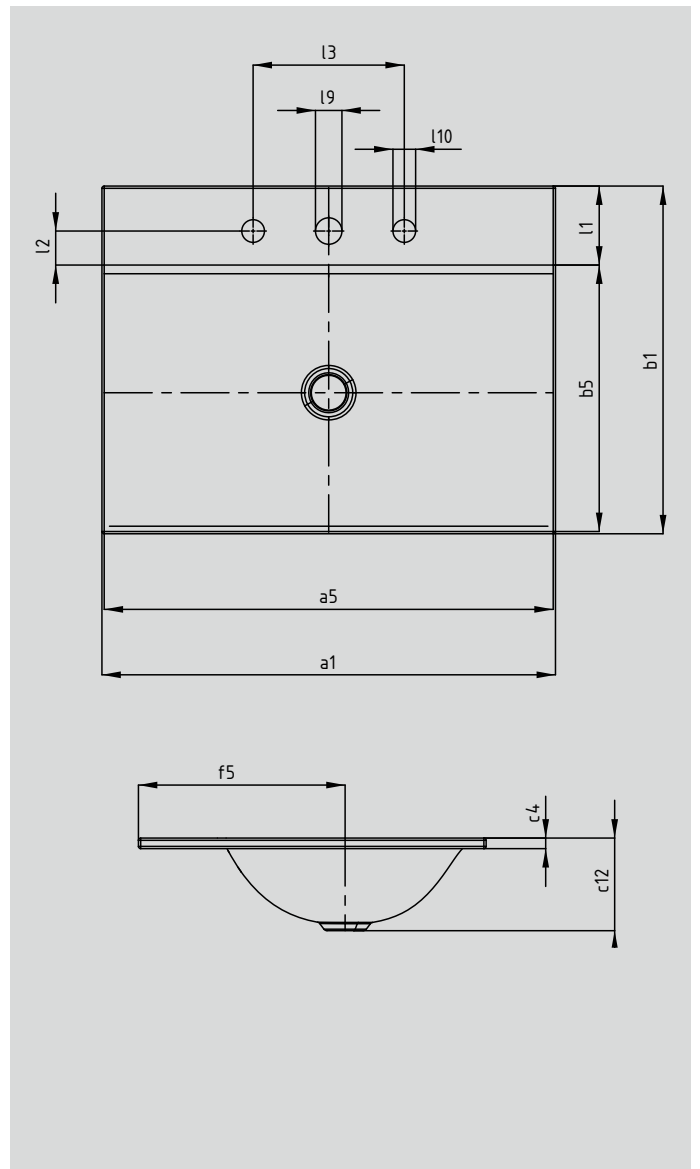


# SILENIO BUILT-IN WASHBASIN

- the flowing, soft design of the washbasin is underlined by a low lip for virtually flush mounting on the console or furniture
- generous space for fittings and individual accessories
- Made of KALDEWEI steel enamel
- designed by Anke Salomon



Model No.		inch	mm	inch	mm	inch	mm
		3037	3037	3038	3038	3039	3039
External length	a <sub>1</sub>	23.62	600	35.43	900	47.24	1200
External width	b <sub>1</sub>	18.11	460	18.11	460	18.11	460
Internal length	a <sub>5</sub>	23.39	594	35.20	894	47.01	1194
Internal width	b <sub>5</sub>	13.88	352.5	13.88	352.5	13.88	352.5
Depth of tap deck	l <sub>1</sub>	4.11	104.5	4.11	104.5	4.11	104.5
Distance tap holes to edge	l <sub>2</sub>	1.77	45	1.77	45	1.77	45
Height of rim	c <sub>4</sub>	0.55	14	0.55	14	0.55	14
Distance basin surface to bottom edge of waste hole	c <sub>12</sub>	4.84	123	4.84	123	4.84	123
Distance outer edge to centre of waste hole	f <sub>5</sub>	10.76	273.4	10.76	273.4	10.76	273.4
Distance of outer tap holes (3 tap holes)	l <sub>3</sub>	7.87	200	7.87	200	7.87	200
Weight of the enamelled washbasin in lbs		15.52		22.95		30.27	